

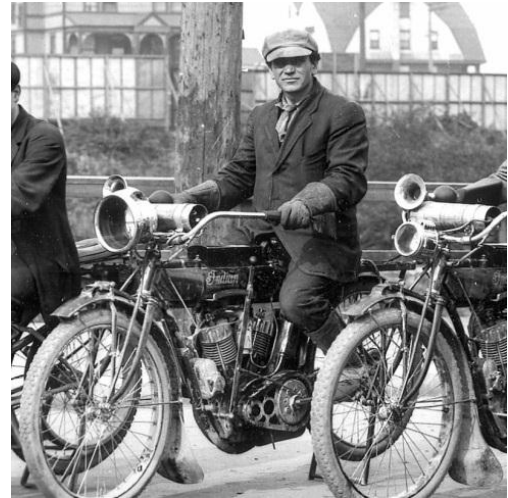
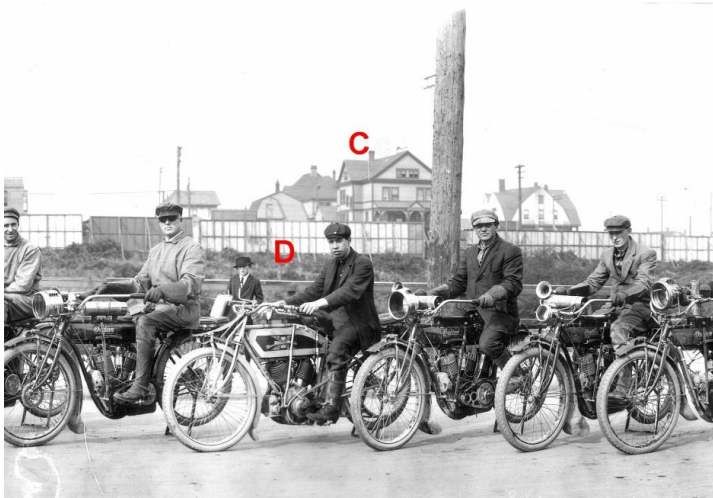
## Photo Forensics Solve History Mystery

A few years ago, we discovered three pictures taken in early Everett. They'd been deliberately taken to form a panoramic picture of nineteen Indian and Excelsior motorcycles, so we scanned them, stitched them together, and saved the result.

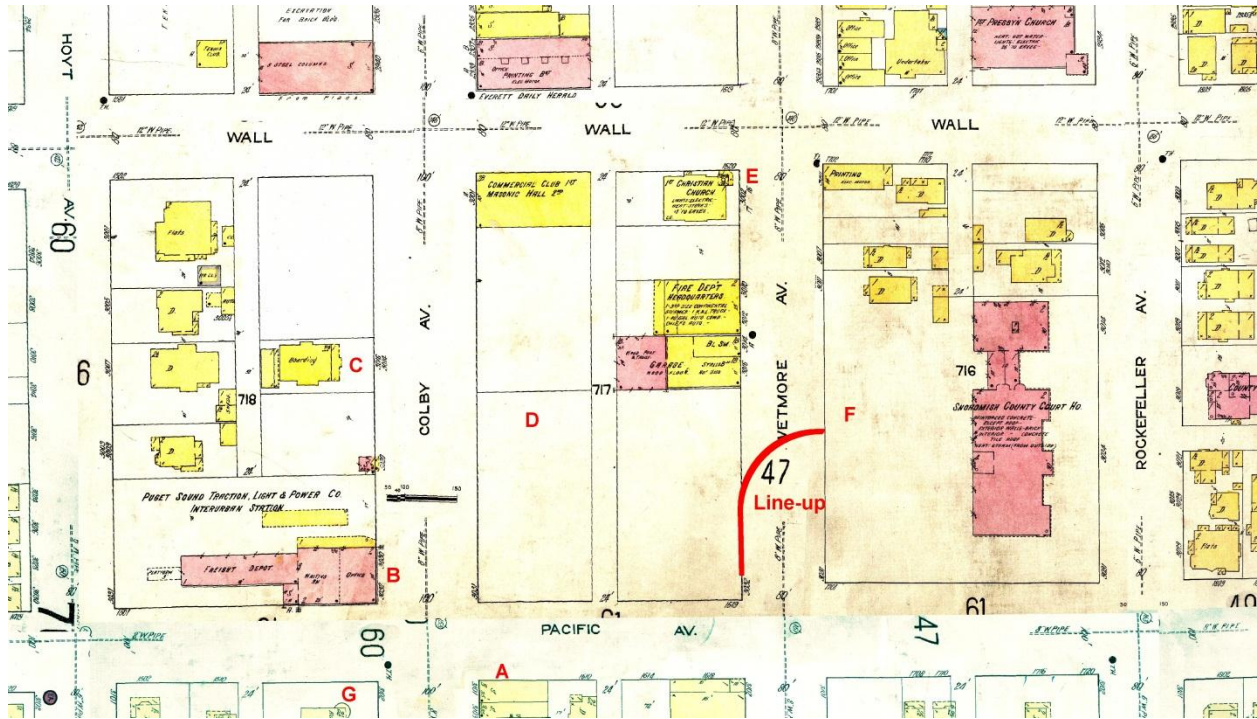
Last week, a museum visitor asked if we had any motorcycle pictures, thinking he'd noticed some during an earlier visit. One of the museum docents, Scott Bower, was there at the time and also happened to be a motorcycle enthusiast. Given the tremendous detail shown in the picture, the discussion turned to "I wonder where exactly in Everett that picture was taken?"



The picture looks great when printed 6 ft long! Amazing detail of the bikes and riders.



Based on the shadows in the picture, there was a large brick building with a unique profile in the background a block to the west, a church steeple just to the north, some large paved steps just to the east of the group, and a large empty block immediately across the street. Scott was in Everett a couple days later when he was sure he spotted the big brick building . . . on the northwest corner of Pacific and Colby! With that clue, it took only moments to confirm his discovery. We zoomed in on the detailed maps maintained at the Museum and found over a half dozen matching items between the picture and our 1914 maps. They're marked on the illustrations:



- A - a three story building with "STEAM HEAT" on it, confirmed as a 3-story building on the map. Historian David Cameron confirmed it to be the Antler Hotel, which survived at that location into the '50s.
- B - a large brick building, marked as the Puget Sound Traction Power and Light Company Interurban Station building on the corner of the next block to the west.
- C - a large residential structure marked as a boarding house on the map a block west.
- D - a large block-square empty lot
- E - a church steeple just a few buildings to the north, labeled First Christian Church on the map.
- F - broad concrete steps next to the motorcycle group, which turn out to be the steps leading to the courthouse, still there today
- G - a large house with a circular turret on its northeast corner, just a block to the west, belonged to the Colby family.

There were more matches, but we were convinced Scott's discovery was right on the money. Could we duplicate that picture today? . . . probably not without getting run over, and buildings now block much of the view, anyway. But it would be a thrill to see that many early motorcycles in one spot!