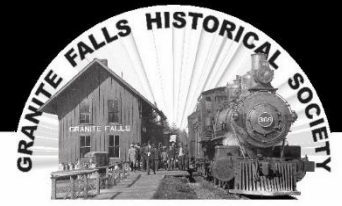


“ . . . to collect, preserve and share the history of the Granite Falls region . . . to protect and interpret that material . . . . to make it available to the greatest possible extent.”

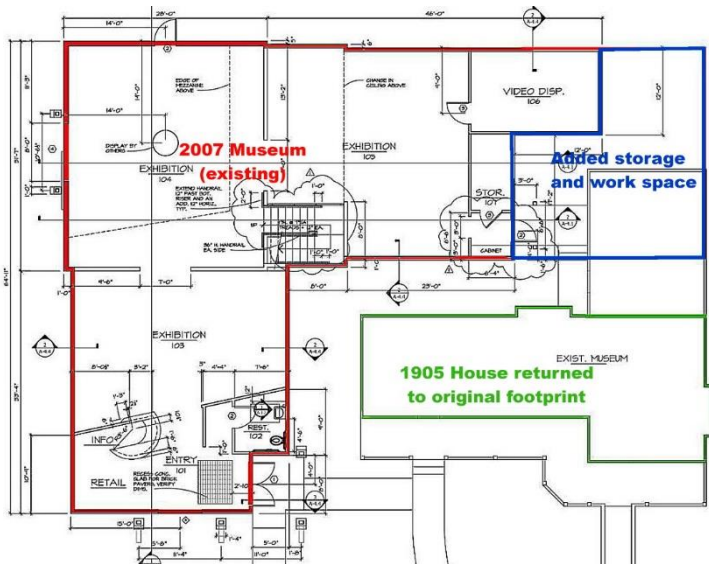


## 2020 A Year Like No Other – in a great community!

Once again, **THANK YOU!** Because of your help, our museum is informative, entertaining, *FREE*, people and pet friendly, engaged in the community, sought after by other organizations for help, and financially healthy! We are actively engaged in helping fellow heritage organizations, and in helping steer the future of historic preservation in Snohomish County. The City and citizens of Granite Falls have helped us live up to our claim to the title of “The Little Museum that Could”. Your encouragement has enabled us to finish 2020 as a healthy organization, even after a year fraught with challenges.

### There we were, cruising along in the open air, anxious to start our 2020 projects . . .

Certainly, our biggest planned project for some time has been the expansion of the main museum building. The success we’ve had in collecting artifacts, documentation, and pictures has gradually led us into a serious problem of space . . . we have none! New items coming in are stored underneath displays, sometimes even out in the open! Books and papers are stored in cabinets and boxes, waiting to be digitized and brought into the collection. Interns and members working on the collection must do so using space and tabletops intended as displays, not as work space or storage! We created a plan, laid out the solution, had it professionally designed, satisfied zoning laws and legal constraints . . . and started work. The expansion was designed as a two-part project: the first part required the removal of the rear wing on the museum’s 1905 Sharp House (that wing was a 1940s addition), while the second part would be the extension of the main building eastward to the limit of our setback line (shown below). In January, we hired a local crew to dismantle the house wing (later in the year, museum members straightened the groundwork and painted the house). We contacted a contractor and starting getting bids . . . roughly \$160K of bids!



### . . . when we suddenly ran smack into COVID!



School Visits  
Sunday Visits  
Dinners  
Malstrom Award Banquet  
Show-n-Shine  
Railroad Days  
Halloween  
Christmas Tree Light

Suddenly, “everything” was cancelled! No Sunday visitors or school class visits. No Malstrom Award banquet or Show-n-Shine celebration. No Railroad Days weekend or holiday celebrations!

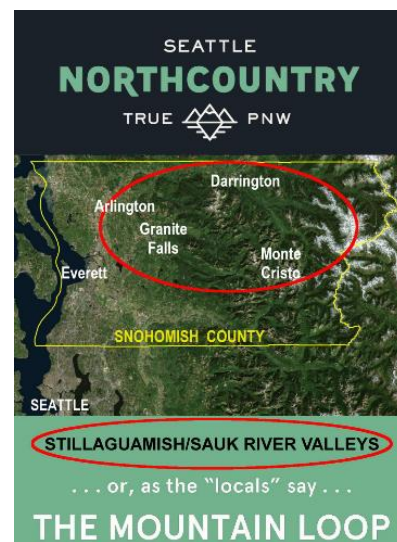
Where are we going? What do we do? A discouraging situation, to be sure, but it didn’t derail us. In fact, our mission hadn’t changed. Things we do to serve our patrons and members didn’t change. Our involvement in county programs didn’t change. Only our dress code and open hours changed – masks up! We’ve been building our online presence for years!

### We continued to partner with County Tourism, County Historic Preservation program, and heritage groups across the county, as well as our local school district!

Snohomish County re-designed its entire tourism program, but accidentally abandoned the Mountain Loop Tour.



Our museum took ownership of the app, and with the help of our friends at OnCell (now called STQRY) renewed the license so that it continues as *a downloadable app for iPhones or Androids*. The county is assuming financial responsibility while we provide maintenance. Grab the “[Mountain Loop Tour](#)” in your app store!

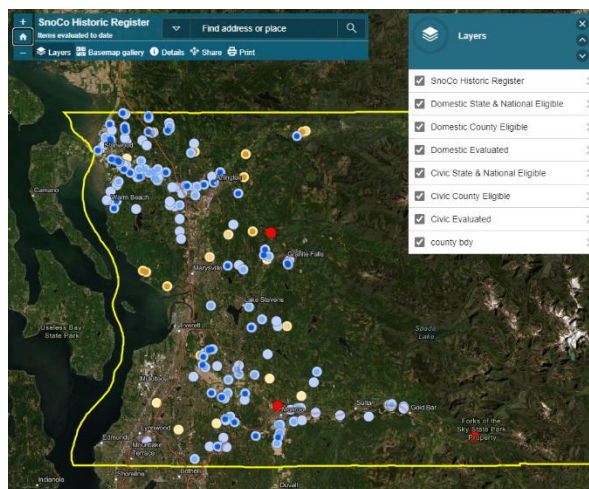


Of course, our local school district is a strong partner, and although we could enjoy neither classroom visits nor museum tours, we delivered two scholarships to outstanding Granite Falls seniors. Cosette Kroeze and George FitzGerald were the 2020 awardees! Our scholarships are the best long-term investments we make each year.



The [Centennial Trail History Day](#), sponsored each year by the SnoCo Historical Preservation Commission was, of course, cancelled. So our museum set up a series of historical stops along the trail, complete with pictures, “factoids” (short uncomplicated historical stories), and a quiz at each location! Hikers/bikers needed only to point their phones at the small signs to participate, and could earn virtual “badges” if they scored well on the quizzes. It operated throughout September, and the Commission plans to add Whitehorse Trail in 2021.

Results from the initial inventory of historical homes and civic buildings in Snohomish County were received in 2020, and we used that data to create an online map. People interested in the [Snohomish County Historic Register](#) can access hundreds of pictures and written evaluations by simply clicking on the building markers on the map.



**Making historical information “available to the greatest possible extent” is an important part of our mission**

And that’s why we need more space . . . space to store new items, and more importantly, space for our folks to work when digitizing materials and creating displays. We have applied to the Murdock Charitable Trust and the Norcliffe Foundation for financial grants, and expect to hear news by March. Meanwhile, we have started to fill a huge new database that holds our pictures, documents, newspapers, yearbooks, and historical texts, after helping to test and refine it for over a year. It is designed to provide FREE storage for all heritage organizations . . . called “[Archive-in-a-Box](#)” (AIB), you can search it for anything!

**ZERO OVERHEAD, 100% EFFICIENT, and TAX-DEDUCTIBLE**

There is no “overhead” in the Museum – 100% of your contributions have gone toward building displays, assembling physical and digital collections, funding scholarships for local students, and operating the museum. We are good stewards of all donations, *staying “in the black” every year (even 2020!)*.

**Please visit the museum online** at [www.gfhistory.org](http://www.gfhistory.org) for newsletters and articles. Search our newspapers, documents, and pictures for items related to the history in which you’re most interested, then decide if you’d like to make a **contribution of any kind that we could use to complete the museum expansion in 2021**. We wish you a healthy, happy New Year, and we’d like to say “THANK YOU” in advance for any further support you care to offer.

*A heartfelt “THANKS” to you,  
from the Historical Society Board!*

**Granite Falls Historical Society  
PO Box 1414  
Granite Falls, WA 98252**

