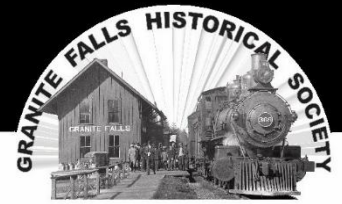


“ . . . to collect, preserve and share the history of the Granite Falls region . . . to protect and interpret that material to make it available to the greatest possible extent.”



Completing a significant 10th Anniversary!

Once again, **THANK YOU!** Because of your help, our museum is informative, entertaining, free, people and pet friendly, engaged in the community, sought after by other organizations for help, and financially healthy! We are a highly-visible community asset, continuing to contribute to historic preservation across the region! In October, we celebrated the 10th Anniversary of the main museum building, which opened in 2007 with your help and support.

No two events are the same . . .

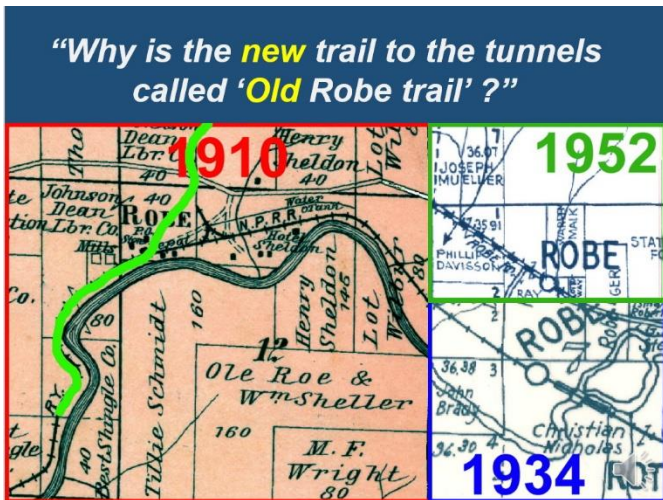


In April, we joined “**Look What’s Local!**” at the Boys & Girls Club with a large screen slide show and brochures. In July, we held a large **book-signing** event at the museum; in August we celebrated “**Show ‘n’ Shine**” by making and serving ice cream outside the museum, then ate ourselves over-full a week later at our annual **picnic**. October had us riding in the “**Railroad Reunion Days**” parade making ice cream,



while hosting another **book signing** indoors. Over 350 people enjoyed **Halloween** at the museum, and we closed the year with our annual “**Christmas tree-lighting**” (sporting all new LED lights), followed a week later by a **holiday party** to celebrate another successful year!

. . . and “Research” is still our middle name . . .



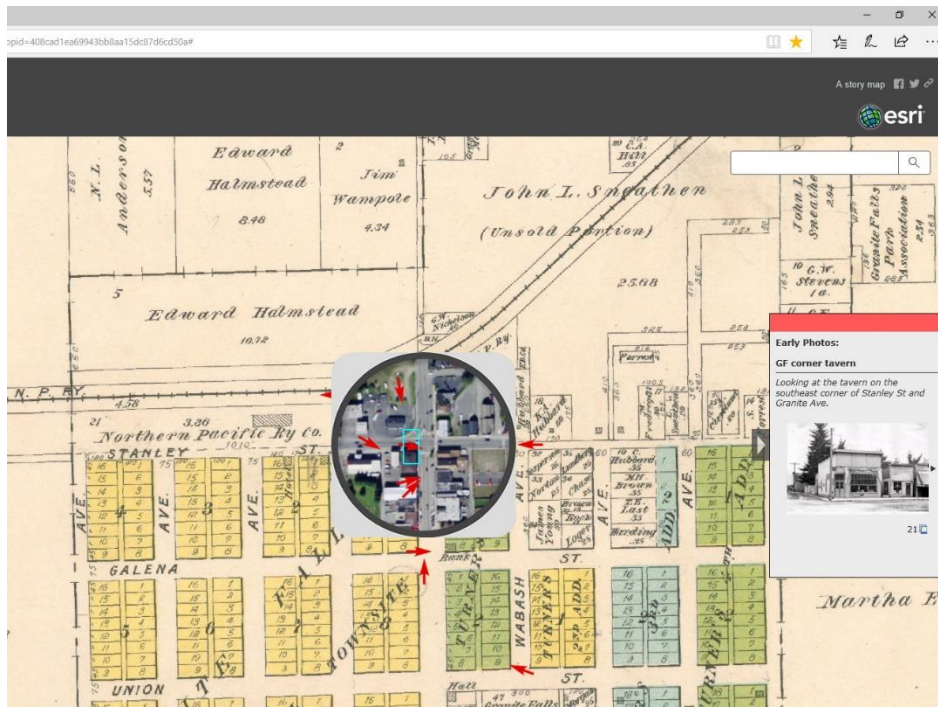
Because of the tools we have (electronic history books, newspapers, yearbooks, maps, etc.), the museum serves as a source of information for innumerable people and organizations. We’ve helped other heritage organizations in the county by providing tools, training, and presentations. We’ve helped government agencies seeking information on historical significance of properties and vintage pictures and environmental histories. We’ve answered dozens of individual online requests for information on ancestors, industries, lost towns, homesteads, mines, mills, businesses, school pictures, and pictures to be used as home/business decor. As the year ends, we’re in the midst of helping a museum in Quebec, Canada

embark on a technical journey much like our own, and we have become a “beta test site” for a nationwide system designed to help small museums put more of their collections online.

County re-organization melded “Historic Preservation” and “Tourism” . . .

Snohomish County decided to place responsibilities for both Historic Preservation and Tourism within the Parks and Recreation Department . . . *bringing new life and vitality to both programs!* The new liaison to the Historic Preservation Commission suggested advertising county heritage organizations at the Evergreen Fairgrounds to the 350,000+ visitors attending the late summer event. GFHS designed and produced 32 6ft and 8ft banners that were displayed during the Fair, and are now destined for display at the county campus in Everett. The Community Heritage Program grant amount for historic preservation has been tripled in size for 2018, with guidelines making it easier for small organizations to attack larger projects. Those guidelines also offer extra support for grant requests that take advantage of the opportunities for historic tourism in the beautiful regions of our county.





... and yielded a new grant to put more of our tools online!

GFHS received a \$4430 grant in 2017 for improved computer tools and training, specifically to enable us to put more of our mapping tools online for widespread access. Explore Snohomish County around 1910 using maps and pictures; examine the top results of the 2015 Historic Resource Scan; or scroll through the decades (including original homestead boundaries) by going to our website: www.gfhistory.org, click on “Research”, then on “Overlay Historic Maps”, and follow the directions. There’s even a “spyglass” that lets you look through the maps to see modern aerial pictures and a “search” box that lets you enter a town, address, or homesteader name. *Have Fun!*

Beneficiaries of a generous bequest

A long-time benefactor of the museum bequeathed several parcels of property jointly to the Museum and the Alumni Association. One downtown parcel was sold by her estate to the City of Granite Falls, the proceeds to be split 60/40 between the museum and alumni, respectively. Those funds give us a great start on raising the money required for our needed building expansion. The remaining parcels are still for sale.



Growing our friends

Our future depends on our visitors, patrons, and friends from all generations. This year we had opportunities to host many classes of local students, to host multiple retirement centers, to meet new friends from across the county (even Europe and Asia), to learn from visitors carrying historical memories and artifacts, to cooperate with other



organizations, and to enjoy multi-generational Granite Falls families . . . *it doesn't get better than this!*

ZERO OVERHEAD, 100% EFFICIENT, and TAX-DEDUCTIBLE

There is no “overhead” in the Museum – 100% of your contributions have gone toward building displays, assembling physical and digital collections, funding scholarships for local students, operating the museum, and “matching” grant money for some of our larger projects. We are good stewards of all donations, staying “in the black” every year, while striving to put every dollar to work for our community, without risking our future as a 501(c)(3) non-profit organization. Our reserve funds are adequate, but plans are being laid for specific fund-raising in 2018 targeted at the much-needed building expansion (we have completed and paid for an architectural design).

We appreciate any contribution, large or small, should you be considering some year-end charitable donations. Please visit the museum online at www.gfhistory.org for the event calendar, newsletters, and articles, where you can search our pictures, documents, and newspapers for items related to the history in which you’re most interested. We wish you a healthy, happy New Year, and we’d like to say “THANK YOU” in advance for any further support you care to offer.

*A heartfelt “THANKS” to you,
from the Historical Society Board!*

**Granite Falls Historical Society
PO Box 1414
Granite Falls, WA 98252**

