

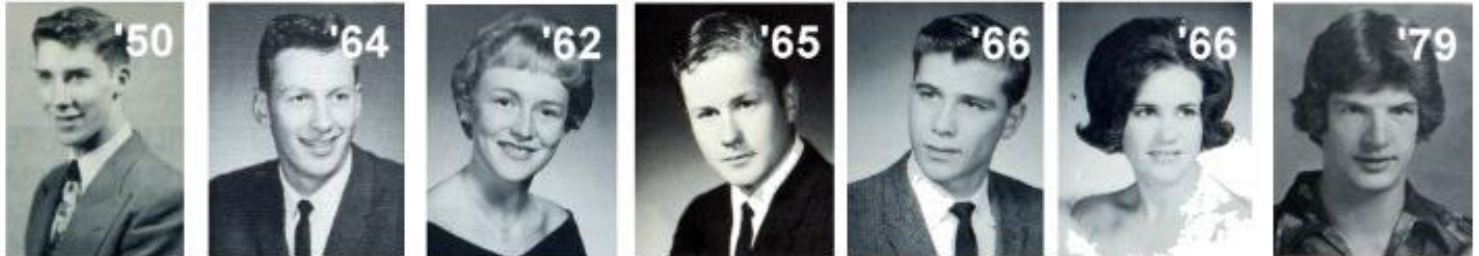
“ . . . to collect, preserve and share the history of the Granite Falls region . . . to protect and interpret that material to make it available to the greatest possible extent.”



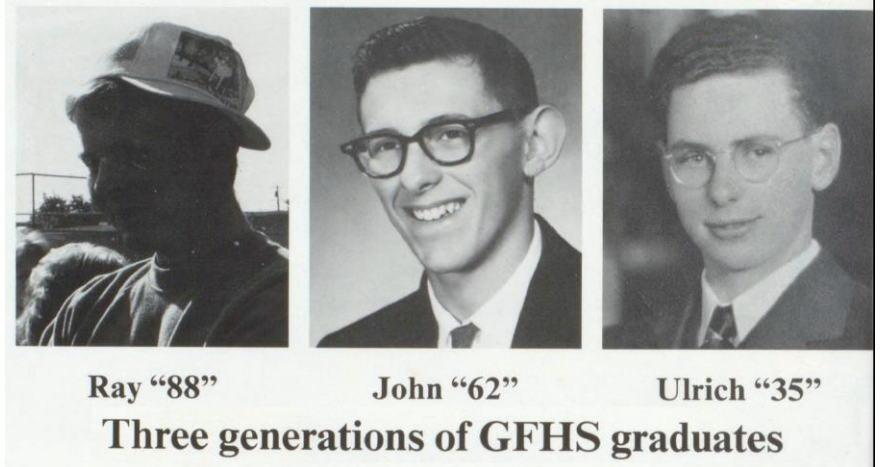
A Year Older, still growing, and healthy!

Once again, **THANK YOU!** Because of your help, our museum is informative, entertaining, free, people and pet friendly, engaged in the community, sought after by other organizations for help, and financially healthy! We are a highly-visible community asset!

Yearbooks Converted from Dust Gatherers to Research Tools!



We received a great offer from Oklahoma Dept of Corrections, who offered to scan all of our yearbooks for free. While that in itself was a great deal, we wanted to subject those scanned images to “optical character recognition” (OCR), which would convert all the names and words into searchable documents. The folks in OK did that as well! Now you can find GFHS students by entering their name or class, to examine their pictures/clubs/sports/activities automatically! The Scherrer family even had three generations of students shown in a single yearbook (1988)!



“Research” is our middle name . . .

Because of the tools we have (electronic history books, newspapers, yearbooks, maps, etc.), the museum serves as a source of information for innumerable people and organizations. January saw requests from the Dept of Natural Resources for special maps, from a lady looking for her great-grandfather’s farm, and from a historical organization looking for information on School #83. Later

requests included information on the resort at Lake Millard, on the now-invisible town of Pilchuck, on census data around Lake Roesiger, on homesteading in the Wallace Falls area, on School #303, on the Menzel family . . . in fact, on just about any subject you can imagine!



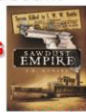
CLOSE ENCOUNTERS OF THE BEST KIND

July 16th

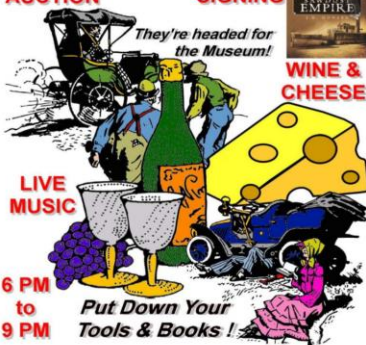
Granite Falls Historical Museum

SILENT AUCTION

BOOK SIGNING



WINE & CHEESE

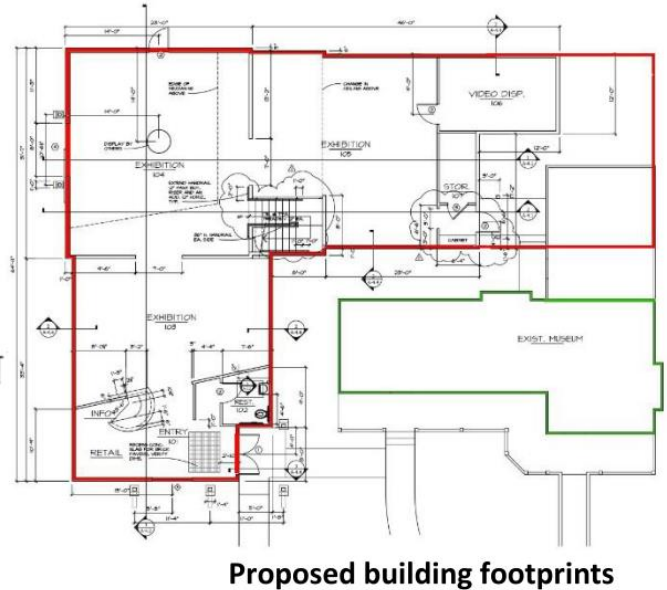
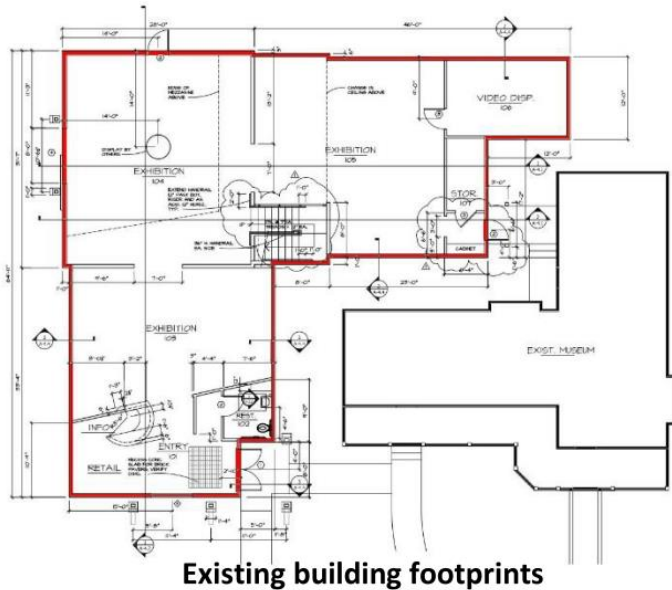


. . . and fun is our game!

Our mid-summer event was fun for everyone, and included a book-signing for Sawdust Empire (if you haven’t read it, you should . . . the good guys end up in Granite Falls), great refreshments, live music and a silent auction. The museum is a great place to hang out with friends and food! The Pilchuck Foundation held another successful community “Night at the Museum” in November, too.

The growth continues . . .

Given the continual growth of our collections, we're running out of space. Display space has always been our first priority, including hanging things from the ceiling (i.e. the Eco-Car from the High School). Unfortunately, we must expand our work and storage space if we are to keep making the same level of contributions to patrons and the community at large. We spent a large sum of money to apply for a zoning variance (approved by the City) and to create preliminary drawings by an architect (completed, ready to pursue estimates). The proposal is two-fold in nature: 1) remove the rear wing of the Sharp House (returning it to its original form), and 2) extend the main east wing of the museum building until it is even with the east wall of the Sharp House. **Progress to be made in 2017!**



Outdoor projects occupied time!

A new sign was fastened to the museum west wall, and the entire lawn was rototilled and replanted. The end results look great, and are complemented by the wonderful improvements made to Wabash Ave by the city.



ZERO OVERHEAD, 100% EFFICIENT, and TAX-DEDUCTIBLE – **but we need your help!**

There is no “overhead” in the Museum – 100% of your contributions have gone toward building displays, assembling physical and digital collections, funding scholarships for local students, and “matching” grant money for some of our larger projects. We are good stewards of all donations, staying “in the black” (2009-\$529, 2010-\$79, 2011-\$23, 2012-\$39, 2013-\$75, 2014-\$1150, 2015-\$1345), while striving to put every dollar to work for our community, without risking our future as a 501(c)(3) non-profit organization. **But we are running a little short in 2016 because of the expansion plan costs (zoning \$1700, architect \$1800).** Our reserve funds are adequate, but plans are being laid for specific fund-raising in 2017 targeted at the building expansion.

We appreciate any contribution, large or small, should you be considering some year-end charitable donations. Please visit the museum online at www.gfhistory.org for the event calendar, newsletters, and articles, where you can search our pictures, documents, and newspapers for items related to the history in which you're most interested. We wish you a healthy, happy New Year, and we'd like to say “THANK YOU” in advance for any further support you care to offer.

*A heartfelt “THANKS” to you,
from the Historical Society Board!*

Granite Falls Historical Society
PO Box 1414
Granite Falls, WA 98252

