

“ . . . to collect, preserve and share the history of the Granite Falls region . . . to protect and interpret that material to make it available to the greatest possible extent.”



A Year Older, and even more thought-provoking!

Once again, **THANK YOU!** Because of your help, our museum is informative, entertaining, free, people and pet friendly, engaged in the community, sought after by other organizations for help, and operating in the black! It's clear from visitor responses that we are an organization that **"Get's it!"**. One recent visitor wrote in an email, "I can't stop thinking about my visit to your museum!"



Got the Time?

The beautiful clock in front of City Hall had been inoperative for years when GFHS made a commitment to the City Council to find a way to put it back in operation. Research was completed, and the choice was made to purchase new digital clock controls that automatically take care of power outages, winter/summer time changes, night lighting, etc. Parts from the supplier arrived late Friday July 25th, and by 10AM Saturday morning, GFHS and the City had the clock back in operation! Enjoy the clock day or night, knowing it's got the right time . . . on both sides!

Got ESP?

A gentleman came in one Sunday and said, "My grandfather lived here and my Dad grew up here, but I'm not sure exactly where their house was. Can you help? Dad's name was Bob Selden." A quick search in our system turned up multiple pictures of Bob Selden, and in each picture, museum ex-president Ted Peddycord was present. A quick call to Ted gave us his old buddy's house location (it originally belonged to Burt Chappell, first mayor of Granite Falls). Then Ted's "significant other" Lonnie Selden got on the phone (she had been married to Bob Selden's brother) and I handed the phone to our visitor, saying "Your aunt wants to talk to you." You should have seen the expression on his face – he had no idea Lonnie was in the area – they'd lost touch a few years ago after several family moves!!



Got Visitors?



An "entry sign" committee started meeting at the Museum early in the year, and in May finalized the design details for 2'x2' signs to "welcome" people to Granite Falls (placed on each of the five roads entering town) and a large 5'x9' polished black granite sign in the Hwy 92 roundabout. ***Final installation is expected in mid-December,*** so keep an eye out for these colorful "welcomes".



In a related effort, the Museum received a letter from Lois Jorgensen (daughter of Frank Ashe), authorizing the Museum, City, and Chamber to use her property on Stanley St (where the "One Spot" locomotive sits), as the location for a 1912 Northern Pacific caboose Visitor's Center. The exact date for moving the caboose hasn't yet been established, but you can imagine the details involved . . . look for it in 2015!



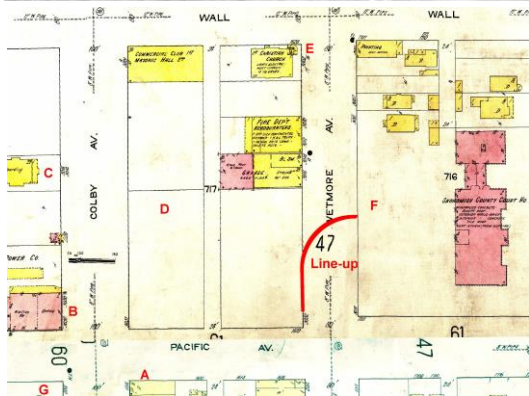
Got Pictures?

We were invited to participate in the Sno-Isle Libraries “Digitize Our Community”, a program by which they are collecting old photographs from communities across the County and presenting the overall collection online. Since our photos are already digitized, within five days, GFHS and the Granite Falls Library provided 130 images, fully documented (including latitude and longitude). They are now viewable on the Sno-Isle website: <http://www.sno-isle.org/catalog/photos> .

Because October 2014 was being celebrated as “Archives Month” in honor of the State’s 125th birthday. GFHS received a request from the State Archives for pictures/documents that could be used to depict the development of the infrastructure of the State. We submitted photos and facts depicting the Falls Bridge, Mountain Loop Hwy, USFS Silverton Nursery and tree planting, Verlot Ranger Station, and the Granite Falls fish ladder.



Got Wheels?



A little detective work by Scott Bower, and confirmation from our mapping system (identifying every building in the picture), let us identify the exact location from which a beautiful panoramic picture was taken in Everett of eighteen Indian and Excelsior motorcycles. A 6-foot long print hangs at the museum. That large picture made a big hit with an antique shop owner in Snohomish, who purchased several copies, then came to the Museum for a visit. He was thrilled to see other pictures of Excelsior motorcycles in front of Ashe’s City Cyclery in 1914, and a 1912 interior shot (you can see the date on the wall calendar in the photo) . . . *he owns a 1912 Excelsior and offered to loan us his motorcycle to display in the museum!*

ZERO OVERHEAD, 100% EFFICIENT, and TAX-DEDUCTIBLE – [but we need your help!](#)

There is no “overhead” in the Museum – 100% of your contributions have gone toward building displays, assembling physical and digital collections, funding scholarships for local students, and “matching” grant money for some of our larger projects. We strive to be good stewards of all donations, staying “in the black” (2008-\$4, 2009-\$529, 2010-\$79, 2011-\$23, 2012-\$39, 2013-\$75), but showing we strive to put every dollar to work for our community, without risking our future as a 501(c)(3) non-profit organization.

We appreciate any contribution, large or small, should you be considering some year-end charitable donations. Please stop by the Museum and see what the “fun” is all about. You can also visit the museum online at www.gfhistory.org for the event calendar, newsletters, and articles, and you can search our pictures, documents, and newspapers for items related to the history in which you’re most interested. We wish you a healthy, happy New Year, and we’d like to say “THANK YOU” in advance for any further support you care to offer.

*A heartfelt “THANKS” to you,
from the Historical Society Board!*

Granite Falls Historical Society
PO Box 1414
Granite Falls, WA 98252

